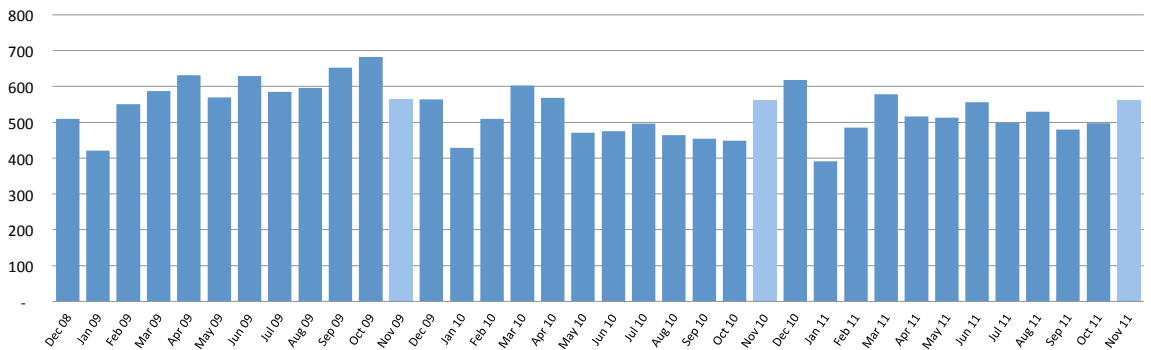
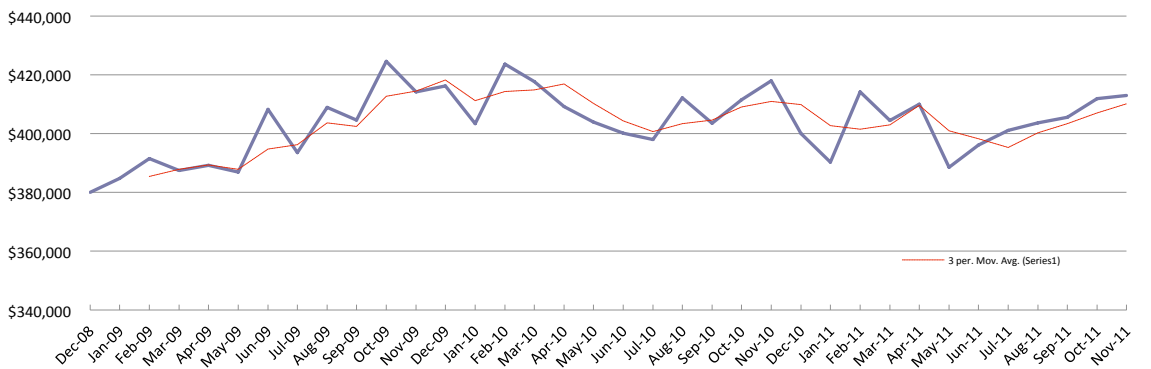


	Sep 11	Oct 11	Nov 11
Property sales	470	508	615
% change vs prior year	+6%	+11%	+0%
Inventory of property for sale (# of weeks)	20.2	23.2	23.4
% change vs prior year	-16%	-9%	-18%
Stratified mean sales price	\$405,525	\$411,930	\$412,925
% change vs prior year	+0%	+0%	-1%
Number of new listings	894	946	1,178
% change vs prior year	+7%	-5%	+6%
Asking price of new listings	\$426,612	\$439,369	\$448,225
% change vs prior year	-2%	-4%	-1%

Property sales
(Seasonally adjusted - Wellington)



Stratified Mean Sale Price
(Wellington)



Inventory of Unsold Homes
(Weeks of equivalent sale - Wellington)

