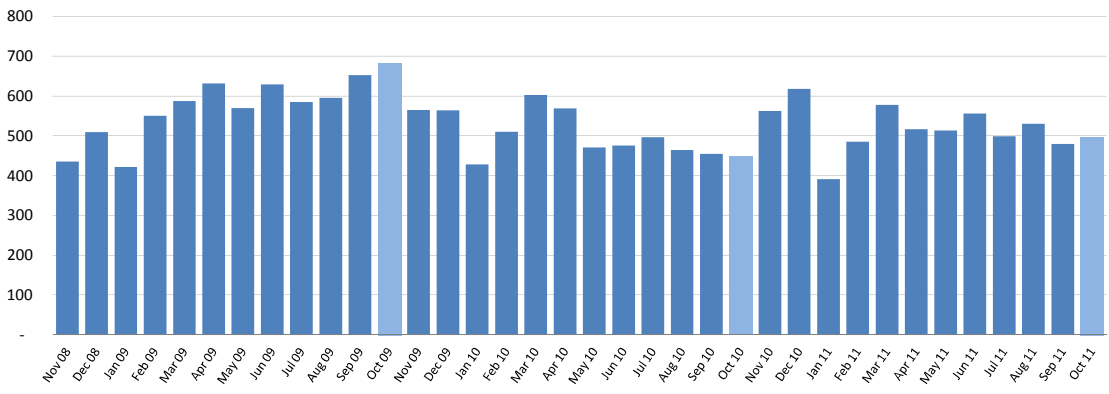
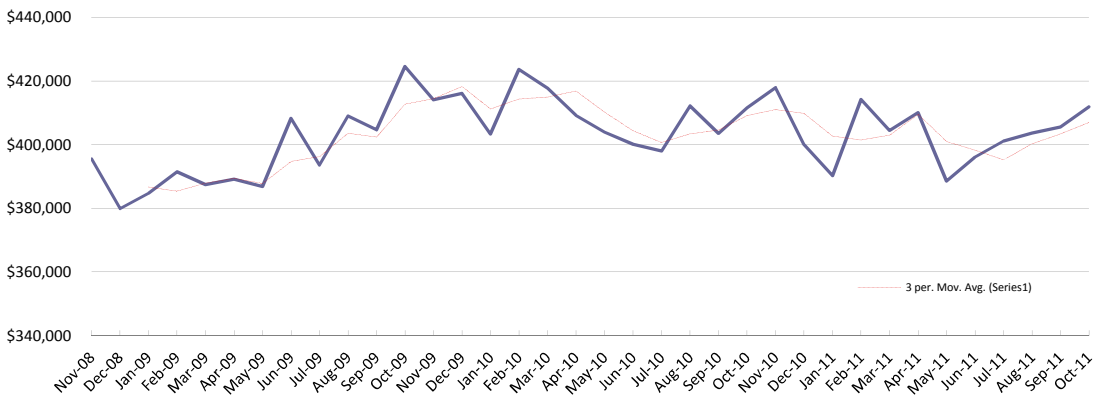


	Aug 11	Sep 11	Oct 11
Property sales	518	470	508
% change vs prior year	+14%	+6%	+11%
Inventory of property for sale (# of weeks)	19.4	20.2	23.2
% change vs prior year	-20%	-16%	-9%
Stratified mean sales price	\$403,656	\$405,525	\$411,930
% change vs prior year	-2%	+0%	+0%
Number of new listings	701	894	946
% change vs prior year	-4%	+7%	-5%
Asking price of new listings	\$422,100	\$426,612	\$439,369
% change vs prior year	-4%	-2%	-4%

Property sales
(Seasonally adjusted - Wellington)



Stratified Mean Sale Price
(Wellington)



Inventory of Unsold Homes
(Weeks of equivalent sale - Wellington)

