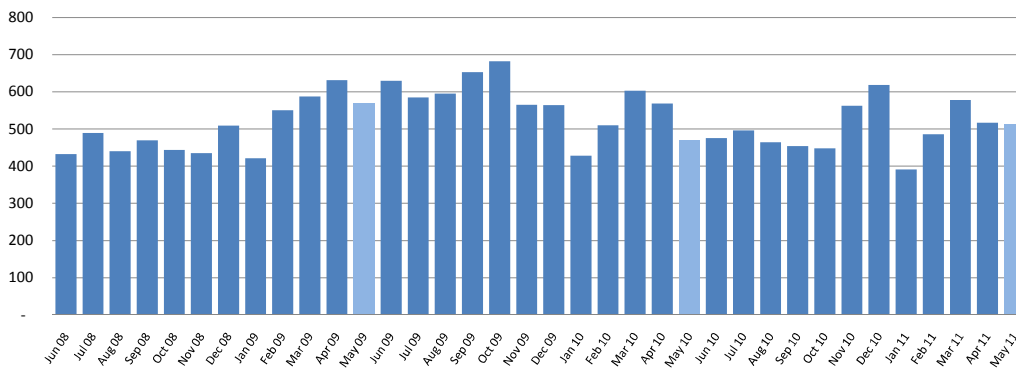




	Mar 11	Apr 11	May 11
<b>Property sales</b>	679	517	<b>538</b>
% change vs prior year	-4%	-9%	+9%
<b>Inventory of property for sale (# of weeks)</b>	27.9	29.1	<b>26.1</b>
% change vs prior year	+4%	+6%	+14%
<b>Stratified mean sales price</b>	\$404,450	\$410,058	<b>\$388,575</b>
% change vs prior year	-3%	+0%	-4%
<b>Number of new listings</b>	1,166	741	<b>758</b>
% change vs prior year	+6%	-29%	-20%
<b>Asking price of new listings</b>	\$453,021	\$451,440	<b>\$426,696</b>
% change vs prior year	+3%	+1%	-4%

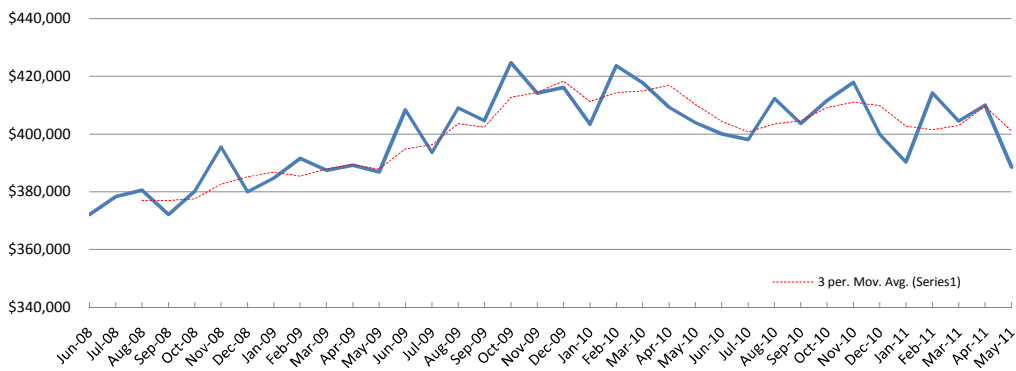
### Property sales

(Seasonally adjusted - Wellington)



### Stratified Mean Sale Price

(Wellington)



### Inventory of Unsold Homes

(Weeks of equivalent sale - Wellington)

