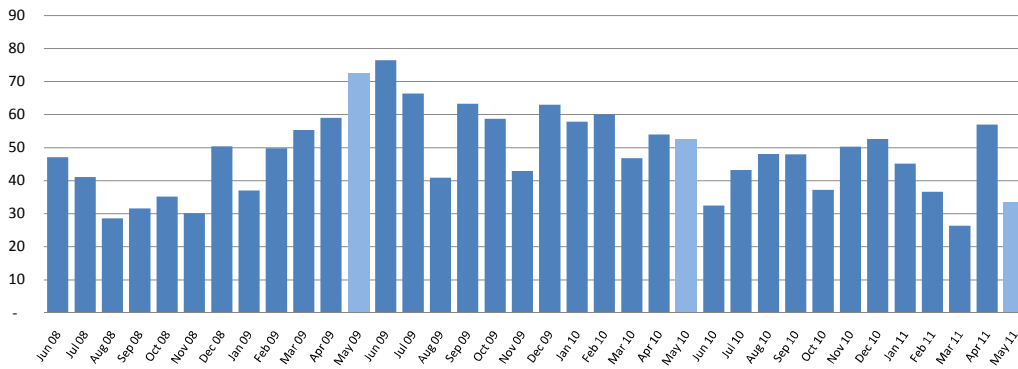




	Mar 11	Apr 11	May 11
<b>Property sales</b>	31	57	<b>35</b>
% change vs prior year	-44%	+6%	<b>-36%</b>
<b>Inventory of property for sale (# of weeks)</b>	128.3	166.4	<b>138.8</b>
% change vs prior year	+38%	+59%	<b>+26%</b>
<b>Median sales price</b>	\$220,000	\$216,000	<b>\$220,000</b>
% change vs prior year	-12%	-17%	<b>-8%</b>
<b>Number of new listings</b>	221	154	<b>159</b>
% change vs prior year	+0%	-18%	<b>-17%</b>
<b>Asking price of new listings</b>	\$266,262	\$278,875	<b>\$278,124</b>
% change vs prior year	-5%	+8%	<b>-5%</b>

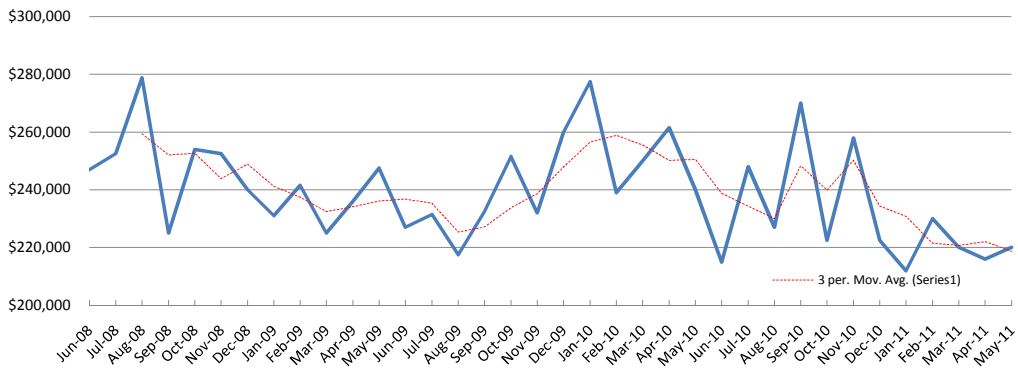
### Property sales

(Seasonally adjusted - Wairarapa)



### Median Sale Price

(Wairarapa)



### Inventory of Unsold Homes

(Weeks of equivalent sale - Wairarapa)

